



堇 力 科 技
AKVO-PACK

江 苏 堇 力 自 动 化 科 技 有 限 公 司

公司简介

江苏堇力自动化科技有限公司前身从事非标专研多年，是一家专门致力于食品包装机械的技术研发、设备制造、销售服务的专业制造商。本公司专业套标机系列、贴标机系列、热熔胶贴标机系列、输送、风送系列、食品类输送设备系列。产品覆盖饮料、调味、食品、日化等行业。先后与统一企业、百威啤酒、太太乐集团、天喔集团、湖南辣妹子等国内知名企业合作。为满足客户和市场需求，多年以来我公司技术人员积累了大量的设计和制造经验，并且在技术上不断创新，研究和开发了适用范围广、可靠性更高的新型机械，为客户提供最经济可靠后道包装工程的解决方案。

公司秉承：以人为本、诚信经营
的经营理念期待与您的合作！

JiangSu JL packaging machinery co., LTD., formerly Shanghai engaged in non-standard study for many years, is a dedicated to food packaging machinery technology research and development, equipment manufacturing, sales and service of professional manufacturers. This company specialized set of marking machine, labeling machine, packing machine series, the series of conveying the wind to send, unloading pallet series, lifting ring equipment series. Products cover drinks, flavor, daily chemical and other industries. In order to meet customer and market demand, over the years my company technical staff has accumulated a lot of design and manufacturing experience, and in technology innovation, research and development of new type machine of applicable range, higher reliability, to provide customers with the most economic and reliable way of packaging engineering solutions.

Company uphold: **People-oriented, honest management**
The management idea of look forward to cooperating with you!

● JL系列全自动套标机

JL Model Sleeve Label Machine

1. 全罩式不锈钢主机：全机防水不生锈；
2. 可调式刀盘：独创回旋切断，双面刀刃，寿命长久；
3. 单定位式中心导柱：标签导送更加稳定；
4. 同步分瓶器：瓶子输送更加稳定；
5. 标签刷下组：套标精度更加准确；
6. 标签控制电眼架：独创尾翼与电眼结合，提高膜料切断精度；
7. 按键式控制箱：操作更人性化；
8. 独立供料式料架：可自由选择料架位置。



- 1 All-cover type stainless steel host machine: the whole machine is waterproof as well as rustproof.
- 2 Adjustable cutter head: unique cyclotron cut-off, double sided cutting edge with a long service life.
- 3 Single positioning centre guide pillar: more stable for label delivery.
- 4 Synchronous bottle divider: a more stable transmission for the bottle.
- 5 Bottom set label brush: more precision for casting label.
- 6 Label-controlling electric-eye shelf: unique combination of tail and electric-eye to improve the precision for cutting off the membrane materials.
- 7 Push-button control cabinet: a more humanized operation.
- 8 Independent feeding material shelf: the position of the material shelf is optional at will.



技术参数

Technical Parameters

型号	Model.	160B	260B
输入功率	Input Power.	1.5KW.	3.0KW.
输入电压	Input Voltage.	φ 3, 380/220VAC.	φ 3, 380/220VAC.
生产速度	Production Efficiency.	160 瓶/分 (Bottle/min) .	260 瓶/分 (Bottle/min) .
适用瓶身直径	Applicable Diameter of Bottle Body.	φ 28mm~ φ 125mm.	φ 28mm~ φ 125mm.
适用标签长度	Applicable Length of Label.	30mm~250mm.	30mm~250mm.
适用标签厚度	Applicable Thickness of Label.	0.038mm~0.13mm.	0.038mm~0.13mm.
纸管内径	Applicable Internal Diameter of Paper Tube.	3"-10" 自由调整 Free Adjustment.	3"-10" 自由调整 Free Adjustment.
主机尺寸	Size of Host Machine.	L2000mm x W1200mm x H2000mm.	L2000mm x W1200mm x H2000mm.

适用套标品种类型

Applicable Types of Bottles

适用各种瓶型的果汁、茶饮料、乳制品、纯净水、调味品、啤酒、运动饮料等食品饮料行业。

it applies to such food & beverage industries as fruit juice, tea drink, dairy products, pure water, condiments, beer and sports drink, etc. of all kinds of other bottle type.

电器配置说明

Electrical Configuration

采用了PLC可编程控制器、进口伺服电机、伺服驱动器、变频器以及传感器。另外采用了定位模块使套标套标精确、快速、稳定。

It adopts PLC programmable controller, imported servo motor ,servo driver, frequency converter and transducer ; also, it adopts the positioning module to ensure the casting label precise ,rapid and stable.



技术参数

Technical Parameters

360B.	460B.	600B.
3.5KW.	6.0KW.	8.0KW.
φ3, 380/220VAC.	φ3, 380/220VAC.	φ3, 380/220VAC.
360 瓶/分 (Bottle/min) .	460 瓶/分 (Bottle/min) .	600 瓶/分 (Bottle/min) .
φ28mm- φ125mm.	φ28mm- φ125mm.	φ28mm- φ125mm.
30mm-250mm.	30mm-250mm.	30mm-250mm.
0.038mm-0.13mm.	0.038mm-0.13mm.	0.038mm-0.13mm.
3"-10"自由调整 Free Adjustment.	3"-10"自由调整 Free Adjustment.	3"-10"自由调整 Free Adjustment.
L2000mm x W1200mm x H2000mm.	L2500mm x W1200mm x H2000mm.	L2500mm x W1200mm x H2000mm.

● JL系列双机头全自动套标机
JL Double heads Sleeve Label Machine

为了满足国内外市场需求，我公司开发了双机头结构，可满足瓶口、瓶身同时套标的需求。

优点：一机两用，可减少一台套标机，节省成本，

减少了输送线长度或避免了二次搬运，提高了生产效率和减少了设备占用面积，减少过程磕碰等，提高产品质量。

In order to meet the needs of markets at home and abroad, our company has researched and developed double head mechanism to meet the requirements of casting label for bottle mouth and bottle body.

Advantages: the machine can be used in two ways. It not only reduces a trapping label machine, but also proves as cost effective for our clients;

It reduces the length of conveying line and avoids the secondary transportation ,so that it increases the production efficiency and the capacity of floor area .of the equipment;

It also reduces stumbles in the process and increase the quality of product.



适用套标品种类型

Applicable Types of Bottles

此设备套标精准，可适用于各种瓶型以及六角油桶的套标和封口。适合超大瓶型（3~5升桶状容器）。此产品大量销售于国内外地区。

With the accurate casting label, the equipment applies to the casting label and sealing of bottles with various shapes and hexagonal oil drum, Suitable for larger bottle-type (3-5 liters barrel containers). The products are sold in quantity to the domestic and



技术参数

Technical Parameters

型号	Model.	C150.	C250.	C350.
输入功率	Input Power.	2.6KW.	3.0KW.	4.5KW.
输入电压	Input Voltage.	φ 3, 380/220VAC.	φ 3, 380/220VAC.	φ 3, 380/220VAC.
生产速度	Production Efficiency.	2 x 150 瓶/分 (Bottle/min) .	2 x 250 瓶/分 (Bottle/min) .	2 x 350 瓶/分 (Bottle/min) .
适用瓶身直径	Applicable Diameter of Bottle Body.	φ 28mm~ φ125mm.	φ 28mm~ φ125mm.	φ 28mm~ φ125mm.
适用标签长度	Applicable Length of Label.	30mm~250mm.	30mm~250mm.	30mm~250mm.
适用标签厚度	Applicable Thickness of Label.	0.038mm~0.13mm.	0.038mm~0.13mm.	0.038mm~0.13mm.
纸管内径	Internal Diameter of Paper Tube.	3"-10"自由调整 Free Adjustment.	3"-10"自由调整 Free Adjustment.	3"-10"自由调整 Free Adjustment.
主机尺寸	Size of Host Machine.	L3200mm x W1200mm x H2000mm.	L3200mm x W1200mm x H2000mm.	L3200mm x W1200mm x H2000mm.

● JL-2000 型蒸汽收缩炉
JL-2000 steam shrinking Tunnel

新式蒸汽收缩炉，针对不同及不规则圆瓶、方瓶、扁瓶等瓶型，调整、维修方便，收缩平整。蒸汽喷出方式低压分汽，分配均匀且采用无缝钢管设计，出气口分为三段可调式，每段高低、前后及出气量均可分别调整。达到完美收缩效果。全机外壳采用不锈钢制作而成并加以保温，不仅节约能源，且符合国际安全标准，底部不锈钢接水盘集中冷凝水。采用防水设计，操作维修方便。

In case of different and irregular round bottles, square bottles and flat bottles etc, the new-style steam shrinking oven is easy to adjust and maintain. It has an even shrinking. The distribution of low-pressure steam drum and spouting way of steam are uniform and designed with seamless tube. The nozzle is divided to be adjustable three segments and the height, position and steam output of every segment can be adjusted respectively so as to gain the perfect shrinking effect. The whole machine is made of stainless steel with heat preservation, which not only saves energy, but also complies with the international safety standard. The stainless steel defrosting tray collects condense water. The whole machine adopts the water-proof design with the convenience of easy operation and low maintenance.

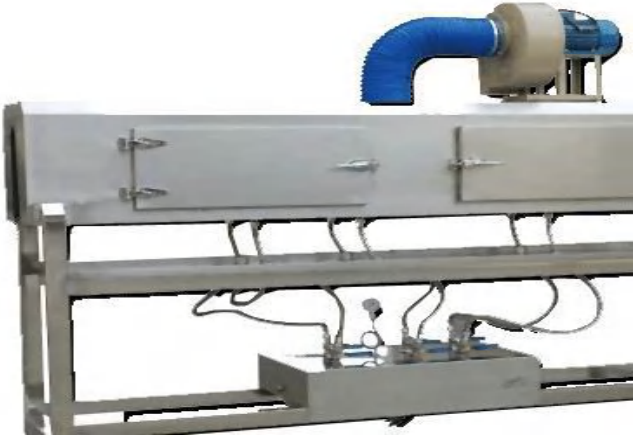
特别制造 Special Design

可在原配置的情况下，制造成双层保温，以达到节能、环保的作用。
Based on the original configuration, double layer holding furnace is manufactured to take effect on energy saving and environmental protection.

JL-1500 型电热收缩炉
JL-1500 Electric Heating shrinking Tunnel

特殊设计热风收缩炉，较好节能效果：收缩后产品外部无水珠。
With a unique design, which has improved efficiency thus delivering a saving of energy; After shrinkage, the outside of product has no water globules and it can be packed directly

技术参数 Technical Parameters		
风机输入功率	Input Power supply of Blower	φ 3, 380V/50Hz 0.2KW.
电 源	Power Source.	φ 3, 380V/50Hz.
输 入 功 率	Input Power.	18KW.
重 量	Weight.	280Kg.
通道规格	Channel Specification.	L1500mm x W160mm x H350mm.
外型尺寸	External Dimension.	L1500mm x W430mm x H1600mm.



技术参数 Technical Parameters		
风机输入功率	Input Power supply of Blower	φ 1 220VAC 0.37KW.
工 作 压 力	Working Pressure .	≤0.4Mpa.
重 量	Weight.	230Kg.
蒸 汽 耗 量	Steam Consumption.	10~20Kg/H.
炉 体 尺 寸	Size of oven body.	L2000mm x W400mm x H450mm.



● JL-蒸汽发生器系列 JL-Steam Generator

本机系全自动电热蒸汽发生器进水采用铜体高压潜涡泵，供水时间短，经久耐用。水箱中设有液位浮球自动控制进水量。工作系统全部自动控制，接通水源、电源5分钟左右，即可连续不断地输出蒸汽，工作效率极高。

The water is fed into the series of wholly automatic electrical heating generator by high pressure potential vortex pump made of copper with short waters-supply time and durable service A floating ball for liquid level is fixed in the water tank to automatically control the water amount .working system is all automatically controlled after connecting the water supply and power supply for 5 minutes or so ,it can output the steam continuously with a high level of working efficiency

技术参数 Technical Parameters		
输入功率	Input Power supply of Blower	φ 3, 380V/50Hz 18/24/36KW.
蒸汽压力	Steam Pressure .	0.25~0.4Mpa.
蒸汽产量	Vapor Generation.	24/26/48KG/H.
外形尺寸	Physical Dimension.	L600mm x W550mm x H1200mm.
重量	Weight.	96/120/150KG.



JL-不干胶贴标系列

JL-Adhesive Label Sticking Machine

此机型适用于食品、制药、化工、化妆品等行业。主要应用于扁瓶、油瓶、纸箱、纸盒等物品自动准确的贴上不干胶标签。

The machine is fit for food .pharmacy, chemical engineering makeup ,etc .It mainly has application in automatic and accurate labeling of non-drying label etcetera in flat bottle ,oil , cartons ,paper box objects , etc.



技术参数 Technical Parameters		
输入功率	Input Power supply of Blower	φ 1 220VAC 0.2KW.
贴标速度	Poster Speed.	20~80 件/分 (item/m) 与被贴物及标签尺寸有关. related to posted objects and label size.
被贴物尺寸	Posted Object Size .	L50~200mm; W30~150mm; H50~300mm.
纸管内径	Diameter of Paper Tube.	76MM (3").
适用标签长度	Applicable Length of Label.	10mm~300mm.
适用标签宽度	Applicable Width of Label.	20mm~130mm.
外形尺寸	Physical Dimension.	L2400mm x W850mm x H1600mm.

● JL-直线胶浆贴标机系列

JL-Linear glue paste labeling machine

此直线贴标机适合在圆柱或圆锥形的玻璃瓶上贴标，机器的主框架采用碳钢焊接组成，表面进行防锈处理，外表面覆盖AISI304不锈钢。

齿轮箱采用长效油脂润滑，机器速度调节采用变频调速，速度调节连续、流畅；机器设有无瓶不贴标装置及胶浆厚度调节装置；8. 机器的链道长2.8米（带不锈钢82.6mm链板）；机器由螺旋进瓶部分、标站、上胶涂胶部分、真空取标部分、紧急制动停止及压标部分组成，压标皮带采用原装日本达基进口产品。入口处采用日本进口欧姆龙光电眼来检测瓶子进行贴标，对磨砂瓶也可灵敏检测。气缸和电磁阀等由日本SMC公司制造。采用PLC 程序全自动实现贴标过程，较单片机控制实现的动作更稳定, 维修也更便利。PLC编程器和变频器分别采用韩国LG和台湾台达。进瓶螺旋处装有倒瓶停机装置，可保护螺旋和避免挤碎容器。

This straight-line labeling machine is suitable for labeling cylindrical or conical glass bottles. The main frame of the machine is made of carbon steel welded, the surface is rust-proof treated, and the outer surface is covered with AISI304 stainless steel. The gear box is lubricated by long-acting Grease, the speed of the machine is adjusted by frequency conversion, the speed is adjusted continuously and smoothly, the machine is equipped with no bottle labeling device and glue thickness adjusting device, the chain length of the machine is 2.8 meters (with stainless steel 82.6 mm chain plate) ; The machine consists of screw-in bottle part, marking station, gluing part, vacuum marking part, emergency braking stop and marking part. The marking belt is made of original Dachi imported products from Japan. Imported from Japan Omron optical eye to detect bottles for labeling, on frosted bottles can also be sensitive detection. Cylinders and solenoid valves are manufactured by SMC Company of Japan. The automatic labeling process is realized by PLC program, which is more stable and more convenient than single-chip microcomputer control. The PLC programmer and the frequency converter adopt Korean LG and Taiwan Taida respectively. The upside-down bottle stopping device is arranged at the screw-in place to protect the screw and avoid crushing the container.

技术参数 Technical Parameters	
输入功率 Input Power supply of Blower	380V 1.2KW.
贴标速度 Poster Speed.	100 件/分 (item/m) 与瓶贴物及标签尺寸有关, related to posted objects and label size.
被贴物尺寸 Posted Object Size .	40~100mm
纸管内径 Diameter of Paper Tube.	76MM (3") .
适用标签长度 Applicable Length of Label.	30mm~300mm.
适用标签宽度 Applicable Width of Label.	30mm~240mm.
外形尺寸 Physical Dimension.	L2800mm x W850mm x H1100mm.



● JL-ZL 直线式热熔胶贴标机
JL-ZL Linear Hot Melt Labeling Machine



先进的设计 Advanced Design

- 1. 商标切割刀片调整容易
- 2. 真空吸标轮采用高硬度材质制成；添加的褶皱处理程序可减少商标摩擦，防止静电产生
- 3. 更换兼容件的工作可在10分钟内快捷高效地完成
- 4. 可利用手动操作盘精确而又方便地调整好刀片位置
- 5. 真空吸标轮及商标切割部位下部采用耐磨损防发热的特殊材质制成。
- 6. 商标长度改变时，自动调节钮看自动调节好位置。
- 1.It is easy to adjust the label cutting knife
- 2.The vacuum drum is made of high rigid material to minish friction and static
- 3.Rapid changeovers: modular design and quick release change parts have changeovers fast and easy in ten minutes
- 4.It is easy and accurate to use hand handle to adjust the position of cutting knife
- 5.The vacuum manifold at the lower part of drum and cutter is made of heat & wear resistant material
- 6. The automatic label length controller can adjust the position



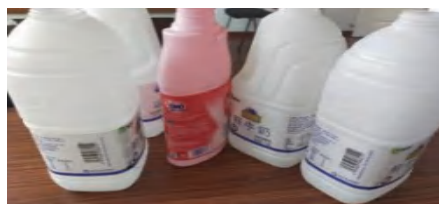
技术参数 Technical Parameters

型号	Model.	ZL.
涂胶方式	Glue Way.	滚涂/Roll.
输入功率	Input Power.	7.5Kw/380V/50~60Hz.
标签方式	Length of labeling.	卷标/Curl label.
生产速度	Production Efficiency.	3000~18000 瓶/时 (Bottle/H) (与标签尺寸相关, Associated with the label size).
适用瓶身直径	Applicable Diameter of Bottle Body.	φ 30mm~ φ100mm.
适用标签长度	Applicable Length of Label.	180mm~300mm.
适用标签高度	Applicable Height of Label.	25mm~205mm.
适用标签材质	Applicable Material of Label.	Paper, PP, Bopp, PE.
容器材质 (圆柱体瓶)	Material of container(cylindrical bottle).	PE,PET, Glass.
空气耗量	Air consumption.	0.05m3/min (0.5~0.8Mpa).
重量	Weight.	1500Kg.
外形尺寸	Dimensions.	L2310mm x W1770mm x H1760mm.

● JL-XZ 回转式热熔胶贴标机

JL-XZ Rotary Hot Melt Labeling Machine

1. 商标切割刀片调整容易
2. 真空吸标轮采用高硬度材质制成；添加的褶皱处理程序可减少商标摩擦，防止静电产生
3. 更换兼容件的工作可在10分钟内快捷高效地完成
4. 可利用手动操作盘精确而又方便地调整好刀片位置
5. 真空吸标轮及商标切割部位下部采用耐磨损防发热的特殊材质制成.
6. 商标长度改变时，自动调节钮看自动调节好位置。
- 1.It is easy to adjust the label cutting knife
- 2.The vacuum drum is made of high rigid material to minish friction and static
- 3.Rapid changeovers: modular design and quick release change parts have changeovers fast and easy in ten minutes
- 4.It is easy and accurate to use hand handle to adjust the position of cutting knife
- 5.The vacuum manifold at the lower part of drum and cutter is made of heat & wear resistant material
6. The automatic label length controller can adjust the position



技术参数		Technical Parameters
型号	Model.	XZ
涂胶方式	Glue Way.	滚涂/Roll.
输入功率	Input Power.	8.0Kw/380V/50~60Hz.
标签方式	Length of labeling.	卷标/Curl label.
生产速度	Production Efficiency.	3000~36000 瓶/时 (Bottle/H) (与标签尺寸相关, Associated with the label size).
适用瓶身直径	Applicable Diameter of Bottle Body.	φ 30mm~ φ300mm.
适用标签长度	Applicable Length of Label.	180mm~300mm.
适用标签高度	Applicable Height of Label.	25mm~205mm.
适用标签材质	Applicable Material of Label.	Paper, PP, Bopp, PE.
容器材质 (圆柱体瓶) Material of container(cylindrical bottle).		PE, PET, Glass.
空气耗量	Air consumption.	0.05m3/min (0.5~0.8Mpa).
重量	Weight.	2500Kg.
外形尺寸	Dimensions.	L2310mm x W1770mm x H1760mm.

● JL-KX 全自动开箱机

JL-KX Automatic Carton Erector

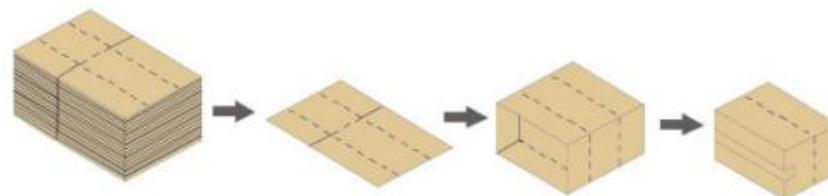
机器特点 Features

- 1.专业精密设计，荣获多项专利及多家国际知名大厂指定采用。国内纸箱成型、封箱速度最快之机型。
- 2.全机采用凸轮连续系统，机器运转确实、稳定、耐用。
- 3.突破传统贴带器之设计，封箱密合，胶带抚平效果优良，绝不跳带。
- 4.任何自黏性胶带均可使用。
- 5.成型及封箱采无段变速控制，可任意调整速度，可节省工时。
- 6.操作简单，调整容易，无损坏纸箱疑虑。
- 7.纸箱储存采卧式，可随时补充空纸箱。
- 8.自动预警提醒更换胶带与补充空纸箱。

- 1.Precision designed and engineered by expertise. This carton erector has been awarded several patents, and has received approval from famous industries around the world. It is the highest speed carton forming and sealing machine in Taiwan.
- 2.Fully cam driven continuous system assures positive and stable motion with maximum stability.
- 3.In a breakthrough for tapping head design, this machine provides extremely secure sealing effect, outstanding tape smoothening performance, without tape slipping problems.
- 4.Accommodates all type of self-adhesive tapes.
- 5.Variable speed adjustment for carton forming and sealing. Reducing labor requirements.
- 6.Easy to operate and adjust. No damage on carton.
- 7.Horizontal cardboard stacking permits for supply of empty carton at any time.
- 8Automatic indication for tape replacement or cardboard supply.



开箱流程图 Work Flow Chart



技术参数

Technical Parameters

型号	Model	KX12	KX25	KX35
输入功率	Input Power	0.55Kw/380V/50Hz	0.75Kw/380V/50Hz	1.5Kw/380V/50Hz
生产速度	Production Efficiency	12 箱/分 (Cartons/min)	25 箱/分 (Cartons/min)	35 箱/分 (Cartons/min)
纸箱暂存量	Cartons Storage Quantity	100pcs (件)	150pcs (件)	300pcs (件)
装箱尺寸	Cartons Size (mm)	L200~450x W150~400 x H100~350	L280~500x W200~400 x H90~400	L280~500x W200~400 x H200~400
空气耗量	Air consumption	150NL/min	450NL/min	450NL/min
胶带尺寸	Applicable Tape Size	2", 2.5", 3"	2", 2.5", 3"	2", 2.5", 3"
主机尺寸	Size of Host Machine	L2000mm x W1900mm x H1200mm	L2780mm x W1250mm x H1840mm	L3540mm x W1250mm x H1840mm
重量	Weight	350Kg	990Kg	1200Kg

● **JL-ZX 全自动装箱机**
JL-ZX Automatic Case Packer

机器特点 Features

在后道二次包装流水线中，装箱机是整个系统运行的核心。装箱机用于产品的外形包装，它是将包装成品按一定排列装入纸箱的一种机械。我公司生产的装箱机为摆复式、平移式、落差式及机器人装箱式等。

In the secondary packaging line, packing machine is the core of the whole system is running. The shape of the packing machine for product packaging, it is the packaging of a product in a certain arrangement in carton machinery. Our company production of packing machine for double entry, horizontally, divide and robot boxing, etc.



电器配置说明

Electrical Configuration

PLC 、变频器、定位及轴控制均采用进口配置
The configurations such as PLC transducer ,position and Axle

适用装箱品种类型

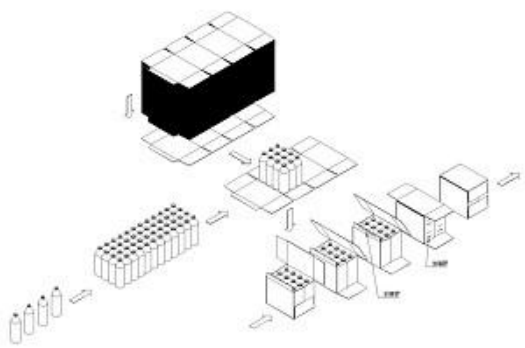
Applicable Types of Bottle

适用于各种生产线上的小瓶口的各类瓶型
Applicable to all small-bottle neck production lines of various types

技术参数		Technical Parameters
输入功率	Input Power.,	10 Kw/380V/50Hz.,
生产速度	Production Efficiency.,	12~35 箱/分 (Cartons/min) .,
设备气源压力	Equipment Air Source Pressure.,	0.5~0.8Mpa.,
空气总耗量	Total Air consumption.,	0.9m3/H.,
主机尺寸	Size of Host Machine.,	L2200mm x W1800mm x H2200mm.,
工作噪声	Work Noise .,	<75 分贝 (DB) .,

● JL-GB 裹包式装箱机
JL-GB Wrap Around Caser

将水平送过来的瓶或罐整理排列为规定形式后，输送到供箱装置提供过来的纸箱，再水平移动，形成左、右面的成形，喷胶、封合等自动包装过程。
This machine shapes the cartons automatically and closes their bottoms flaps within hot glue



电器配置说明

Electrical Configuration

PLC 、变频器、定位及轴控制均采用进口配置
The configurations such as PLC transducer ,position and Axle

适用装箱瓶型

Applicable Types of Bottle

玻璃瓶、PET 瓶、易拉罐等各种生产线上的各类瓶型
Applicable to production lined of various bottle types , Glass bottles, PET bottles ,cans etc.

技术参数		Technical Parameters
输入功率	Input Power.,	8.0Kw/380V/50Hz.,
生产速度	Production Efficiency.,	25 箱/分 (Cartons/min) .,
瓶输送机高度 (进口)	Bottle Conveyor Height .,	1100±50mm.,
箱输送机高度 (出口)	Cartons Conveyor Height.,	670±50mm.,

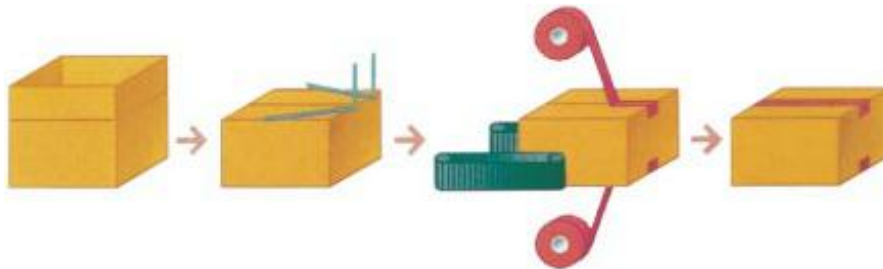
● JL-FX 全自动折盖封箱机

JL-FX Automatic Flaps Folding And Side Belts Driven Sealer

机器特点 Features

1. 本系列是以无人化机型，纸箱上盖自动折入，上下“一”字型自动封箱。
 2. 传动设计方式为两侧皮带驱动
 3. 适用纸箱规格内，不同规格纸箱手动调整
 4. 机件性能精密又耐用，操作方便，运转稳固，使用寿命长，无噪音
 5. 保证较人工贴带美观、速度快、效率高。
- Fit for sealing uniform size carton in mass production line.
Automatic flaps folding and, top and bottom sealing
Side belts driven, suitable for heavy duty operation.

封箱顺序图 Sealing Sequence



技术参数 Technical Parameters

输入电源	Input Power. ,	220V/380V single phase, 50/60Hz or specified by client. ,
适用纸箱	Carton Size . ,	L200~500mm x W180~450mm x H120~450mm. ,
台面高度	Table Height. ,	最小(min.) 580mm 最大(max.) 780mm. ,
皮带速度	Belt Speed . ,	18m/min(可调) The adjustable. ,
使用气源	Pneumatic. ,	0.5Mpa. ,
胶带尺寸	Applicable Tape Size. ,	2" 2.5" 3" 选一适用 (alternative use) . ,
主机尺寸	Size of Host Machine. ,	L1690mm x W830mm x H1180mm. ,
重量	Weight. ,	Approx 180Kg. ,

- 风送/输送系统 Air Conveyor/Conveying System



设备概述 Equipment Overview

输送线是连接各生产设备的桥梁，直接影响到生产线运行效率的高低。该系统机械结构为全新设计，多数构件采用冲压或折弯成形，具有刚性好、重量轻、互换性好的优点。运转可靠，维修方便，电气控制系统采用PLC控制整个实瓶输送、缓冲系统的运行，自动实现运行速度加减速、自动缓冲的功能

The conveyor line is the bridge over every production equipment, which directly affects the operating efficiency of production lines. the mechanical structure of this system is of new design, the majority of components are formed through pressing or bending, which is with advantages of good rigidity, light weight and good interchangeability. With reliable operation and convenient repair, electrical control system adopts PLC to control the conveying of actual bottle and the operation of buffer systems, which realizes the functions of automatic acceleration or deceleration and automatic buffer.



风送装置是使PET空瓶在一定压力与速度的空气的驱动作用下，沿着预定的轨道，有规则的输送至目的地的一种快捷、准确的输送设备。

Air conveyor system is a fast and accurate conveying equipment which makes the empty PET bottles to the destination in the pre-selected orbit by a certain pressure and speed of air



● JL-LD 码垛机 JL-LD Stacker

码垛机适用于纸箱、塑箱、袋装、膜包以及桶类等多种类型包装件的堆叠，设备主机分为进箱、转箱输送、排列暂存机构、主升降堆叠机构、供栈机、满栈输送线等。并可选用垛层隔板装置以增加垛层的稳定性，各种工作形式为不同的码垛而设计，生产速度可达24000-72000BPH。

The Stacker is suitable for stacking carton ,plastic case、shrink wrapped product and five gallons bottling etc. It consists of Case infeed ,classification yard, pusher, pallet feeding etc. Optional interlayer keeps the stack more stable. It can be designed for different palletizing requirements with capacity ranging from 24000 to 72000BPH

技术参数 Technical Parameters

工作方式	Operating Type .,	低位/高位 Low/high.,
生产效率	Production Efficiency.,	30~60 箱/分钟 cases/min.,
处理产品	Handling Product.,	箱, 容器, 易拉罐等 box, plastic, bottle, gag, can etc. .,
产品输送带	Product Conveyor Height.,	高度: 850mm.,
托盘输送带	Pallet Conveyor Height.,	高度: 650mm.,
托盘尺寸	Pallet Size.,	L≤140mm W ≤1300mm 可定制 (Can Be Customized) .,
包装尺寸	Packing size.,	参照样品 reference to sample.,
堆积方式	Layer Type.,	按用户要求 as demanded.,
托盘堆积仓	Pallet Magazine.,	12 个.,
功率	Power.,	23Kw AC380V/50Hz.,
设备重量	Weight.,	约 10 吨 (T) Approx.,
设备尺寸	Size Of Machine.,	L8400 mm x W5300mm x H3700mm.,

● JL-DXD 大桶码垛机
JL-DXD Big Bottle Stacker

- 1. 桶装码垛机是将已罐装好的5加仑桶按一定排列码放在托盘（木质、塑胶）上，进行自动堆码，可堆码多层，然后自动输至实托工位，便于叉车运至仓库储存。本设备采用PLC+触摸屏控制，实现智能化操作管理，实现人机对话，可显示生产速度，故障原因及位置，自动化程度高。简便、易掌握，可大大地减少劳动力和降低劳动强度。
- 2. 采用高速、平稳、节省空间之理念设计。采用分开式脱盘、更快速、更节省空间。 一机多用，调整迅速，可用于多种规格产品码垛。
- 3. 符合食品卫生要求：采用无油润滑的气动元件，60%运动部件之间均采用了终生无需注油润滑的人性化设计，为用户减少了大量的使用成本。
- 4. 适用范围：桶装水，纸箱、中转框等。



- 1.Bottled stacker
can put filled 5 gallon barrel according to a certain arrangement on the tray (wood, plastic),automatic stacking , stacking multilayer ,then automatically output to the real prop station ,easy to forklift transported to the warehouse,
This equipment uses PLC + touch screen control , intelligent operation management , production speed and the cause and the location of the malfunction can be displayed , high degree of automation. Simple, easy to master, can greatly reduce labor and reduce labor intensity
- 2.Using the concept of high speed, stable, save a space design. Use separate type heat off, more rapid, more save a space. One machine is multi-purpose, adjust quickly, pallet can be used for a variety of specifications products.
- 3.With food hygiene requirements :the use of an oil-free pneumatic components, 60% of between the moving parts are used the user-friendly design lifetime without lubrication, reducing users a large number of cost
- 4.Scope of application: bottled water, carton, transfer boxes etc.

技术参数		Technical Parameters
安装电力	Installation Power.,	三相五线 (TN-S) ,AC380V/50Hz, 10Kw.,
生产能力	Capacity.,	1200 桶/时 Barrel/H.,
每层最大载重	Maximum Load Per Layer.,	200kg.,
每托盘最大载重	Maximum Load Per Pallet.,	1600kg.,
最高堆叠高度	Maximum Stack Height .,	1600mm (含托盘高度) (Contained the height of the tray) .,
适用托盘最大尺寸	Used the Tray Maximum Size .,	1300mm x 1100mm (可另行定制) (Can Be Customized) .,
空气耗量	Air consumption .,	500NL/min.,
设备质量	Weight.,	约 8 吨 (T) Approx.,

● JL-DTS 提环机 JL-DTS Bottle Handles Machine

机器特点 Features

本公司自主研发针对，调味、饮料等大容器提环。包括送料机、提手整理机、压提环机，生产速度3600个/小时。
The company independent research and development for, seasoning, beverage and other large container bottle handles. Including feeder, handle sorting machine, the pressure ring machine, production speed 3600 bottles / hour



技术参数

Technical Parameters

设备尺寸	Size Of Machine.,	L1000mm x W800mm x H1500mm.,
工作压力	Working Pressure .,	≤0.4Mpa.,
生产能力	Capacity.,	3600 瓶/时 (BPH) .,
重量	Weight.,	230Kg.,
空气耗量	Air consumption.,	100NL/min.,



JL-DTS 提环机

JL-DTS Bottle Handles Machine

机器特点 Features

本公司自主研发针对，调味、饮料两瓶、三瓶...等多瓶提手包装需求。适用于瓶口直径为 28mm, 38mm, 43mm 和 48mm 产品。操作简单，三段式往返送料装置、电眼限位、缺料预警。

The company independent research and development for, seasoning, drinks two bottles, three bottles of... . Such as bottles of the handle packing requirements. Suitable for bottle 28 mm diameter, 38 mm, 43 mm and 48 mm products. Simple operation, higher feeding device, the electric limit, back and forth in warning

电器配置说明

Electrical Configuration

采用同等PLC及定位模块和伺服电机及变频器，触摸屏人性化操作，全自动调整

It adopts equivalent PLC, positioning module, servo motor and frequency converter. In addition, its touch screen is featured with a humanized operation.



技术参数		Technical Parameters
输入功率	Input Power supply	φ 1 220VAC0.75KW.
工作压力	Working Pressure	≤0.4Mpa.
生产能力	Capacity.	3600 瓶/时 (BPH) .
重量	Weight.	380Kg.
空气耗量	Air consumption.	200NL/min.
设备尺寸	Size Of Machine.	L2200mm x W1000mm x H2000mm.

● JL-CZ30 自动检重秤

JL-CZ30 Check weighing

CZ 系列自动检重秤是经济实用的自动检重解决方案。凭借快速准确的重量采集以及与现有传输设备的轻松集成，使得该系列自动检重秤适用于所有自动包装和物流的检重应用，比如对大包装进行完整性检查，以及对大包、袋或箱式包装进行重量采集。

The CZ caseweighter series is a very cost effective and easy to use dynamic weighing solution. Its fast weight capture and flexible integration into existing conveyor lines make this caseweighter suitable for completeness checking of multipacks and weight capture of larges packages, sacks or cases in all automated end-of-line packaging and logistic applications

技术参数		Technical Parameters
称重范围	Weighing Range ,	1-30 kg.,
精确度 (3σ)	Accuracy (at 3 Sigma)	from ± 20 g.,
通过量 (PPM)	Throughput (PPM),	最大60(max),
分类	classifications.,	上/下限值, 三个重量区域 LED 显示 in 3 weight zones.,



液位检测仪 Liquid level meter

采用核技术, 利用低能光子源与被测物质相互作用后, 射线强度随检测物料料面位置而变化的原理, 以控制检测灌装液体物料容量。由于它的非接触测量方式, 从根本上解决了常规秤量方法无法测量生产流水线上灌装液体物料容量的难题。故广泛应用于食品、医药、化工、武器弹药等灌装 (无论是瓶装还是罐装) 液体物料流水线的在线自动控制。对保证产品质量, 提高经济效益及社会效益具有重要意义。

Using nuclear technology, the use of low energy source of photons interact with the material being measured, the radiation intensity with the test material is expected to face location and the principle of change, to control the testing capacity of filling liquid materials. Due to its way of non-contact measurement, fundamentally solves the traditional weighing method cannot measure the problem of filling liquid materials on production line capacity. So it is widely used in food, medicine, chemical, weapons and ammunition (bottled or canned) liquid filling materials such as on-line automatic control of assembly line. To ensure the quality of products, improve the economic benefit and social benefit is of great significance.

技术参数		Technical Parameters
输入功率	Input Power supply ,	φ1 220VAC 150W.,
容器直径	Vessel diameter ,	40mm~120mm.,
动态分辨率:	Dynamic resolution.,	±1mm, 或±3.2ml (206 四峰质量控制, 传送线速度≤0.5m/s), ±1.5mm, 或±4.2ml (206 四峰质量控制, 传送线速度≤1.5m/s)
静态分辨率	Static resolution.,	±0.5mm, 或±1.6ml (206 四峰质量控制, 传送线速度≤0.5m/s), ±1mm, 或±3.2ml (206 四峰质量控制, 传送线速度≤1.5m/s)
设备尺寸	Size Of Machine.,	L620mm×W165mm×H400mm.,

合作伙伴： Partners

